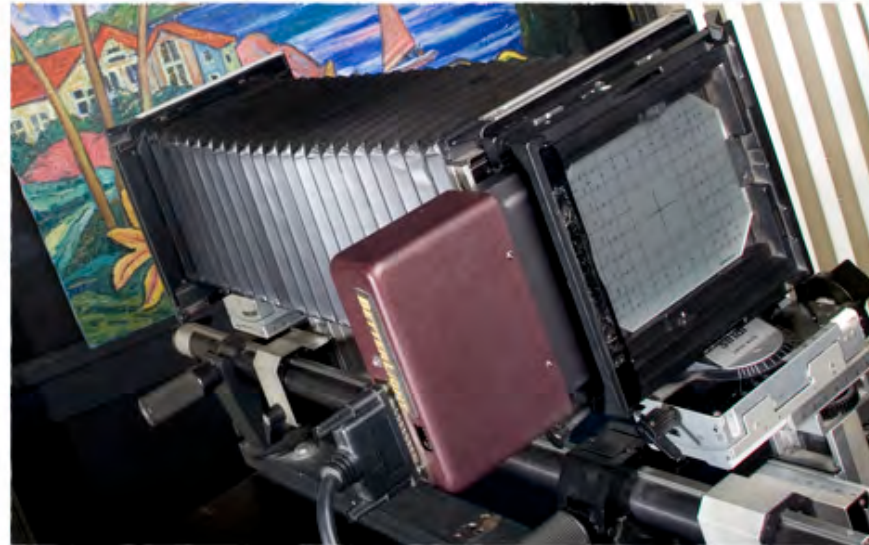


Workflow Tips for Large Format Scanning





Randy Hufford • randy@ivamaui.com

M.Photog., CR Certified Professional Photographer
Digital Print Master and Photographic Artist

Kyle Hufford • zorc@mac.com

Digital Kyle

Becky Hufford • becky@ivamaui.com

Educational Cordinator • Gourmet Chef Rebecca

Rick Hufford • jrhufford@cox.net

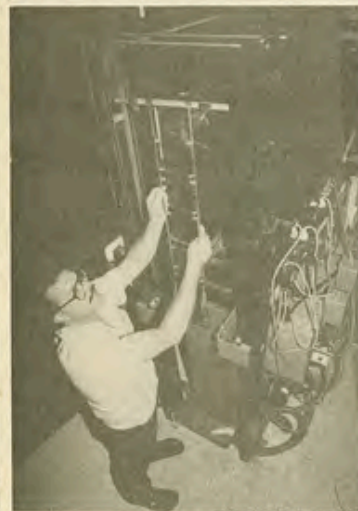
Engineer, Inventor, R&R Copy Systems

Randy Hufford

M. Photog., CR Certified
Professional Photographer
Digital Print Master
Photographic Artist

A12 — Monday, January 30, 1989 — THE MAUI NEWS

Money Matters



The Maui News / WAHNE TARAHA photo

Randy Hufford of Maui Custom Color Lab works with his dip and dunk C-41 negative film processor. "It's all automatic and the developing uniformity is very consistent," he says of the Hostert processor, manufactured in Germany.

Processor adds quality and speed

Custom lab for photographers installs equipment

KAHULUI — Maui Custom Color Lab has added some high-tech film processing equipment to its operation at 251 Lalo St. in the Kahului industrial area.

"We can now offer high quality processing with fast turnaround to all the photographers, professionals and amateurs, on Maui," said Randy Hufford, photographer and president of MCCL. The new equipment has boosted the capabilities of processing up to 90 rolls an hour, "a far cry from how things used to be when we first opened shop 10 years ago and were able to process only about 30 rolls a day," Hufford said.

Installed and in operation for about a month now are two Hostert German-made dip and dunk film processors which allow for "consistently crisp and uniform developing of all films," Hufford said. It handles C-41 processing of negative films and E-6 processing of slides.

"We now offer the only slide processing on Maui and a three-hour service from 135 up to 8-by-10 sizes," he said.

MCCL also has installed custom black and white services with a 24-hour turnaround for developing and contact sheets. A 24-hour service for custom black and white prints also is available. For that, Hufford recently hired Steve Kaputo, a master printer in black and white work from New York.

Sylvan Schwab does the custom color printing, from wallets to mural size photographic. Gary Kevorkian handles the color film processing and is an artist with slide duplication; and Barb Miner is an airbrusher who is "great in restoring old photographs and can do anything imaginable to a photo," according to Hufford.

Becky Pecorino and Marianne Pool are the technical representatives.

Says Hufford: "With what we've got, Maui Custom Color can now serve the high quality quick turnaround needs of the local professionals, in color and black and white."

An Engineered Solution

www.wilhelm-research.com



Companies Endorsing Include:
Premier Art
Epson, Canon, HP
Hahnemuhle

for complete notes
www.ecoprintshield.com

DualEdgeRipper.comTM

Patent Pending



HUFFORD/AD 2002



Digital Printing Workshop

Maui September 20-24, 2010

Tools and Techniques for the Perfect Print

- * Stretcher Bars
- * The Gallery Wrap
- * Coating Canvas
- * Hand Stretching Canvas
- * Machine Stretching Canvas
- * Canvas Finishing Touches
- * Canvas Archival Steps

*Featured in our
Saturday Class*

The Creative Advantage

- * The Direct Advantage
- * The Ripped Advantage
- * The Portfolio Advantage
- * The Craftsman Advantage
- * The Art Advantage

*Featured in our
Saturday Class*



*Author of Software Cinema DVD
The Perfect Print by Randy Hufford*

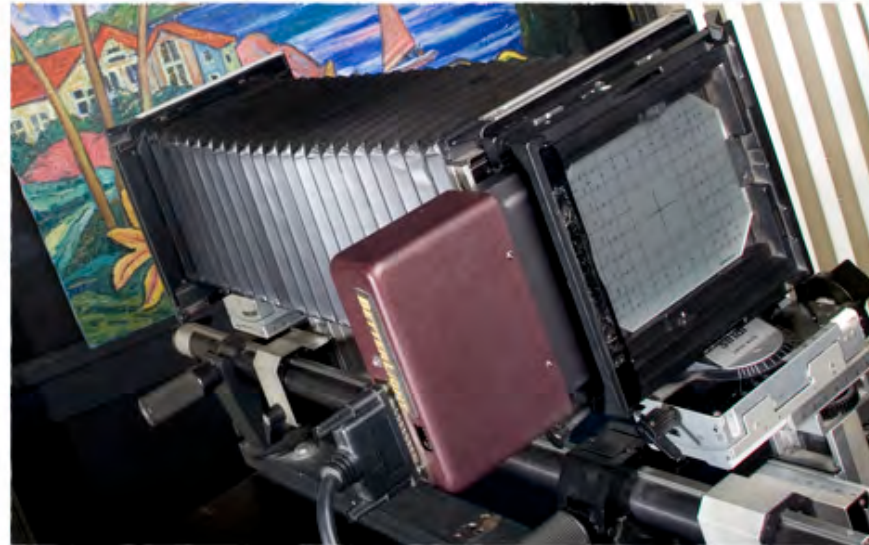


Randy Hufford

My Passion is Fine Art Photography

Art is that which is made with the intention of stimulating the human senses as well as the mind and spirit.

Workflow Tips for Large Format Scanning













Workflow Tips for Large Format Scanning

What we Cover

- * Camera Alignment
- * Camera Cart
- * Hanging Art
- * Lighting Art
- * ViewFinder™ — Scientific versus Visual
- * Robin Myers' EquaLight™ (rmimaging.com)

Height of Camera

- * Match height of main operator to center of lens.
- * Saves operator's back from bending over to line up image and focusing on ground glass.



Camera Cart Advantages

- * Tripod & Camera Set Up plus Zig-Align every image
= 20 to 40 minutes per scan
- * Camera Roller Base: Zig-Align once: 1 to 2 minutes per scan



Zip Align With Camera Cart

- * Camera Roller Base: Zig-Align once
- * Zig-Align lens standard to wall
- * Than Zig-Align back standard to lens standard

Camera Cart

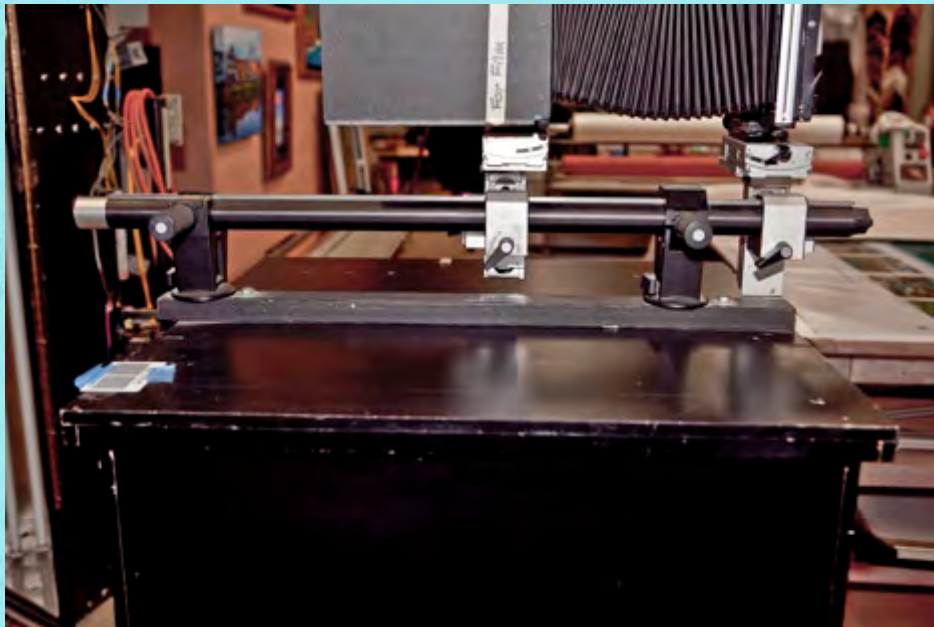
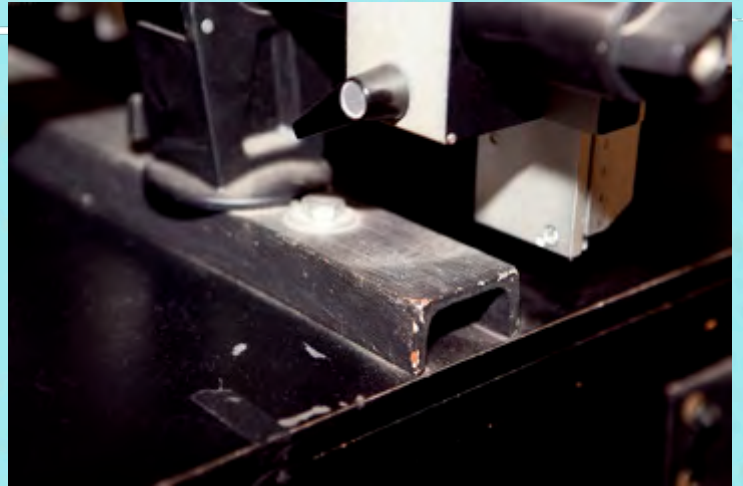
* Removable Rails





Camera Cart

* Securing Camera to Cart



Camera Alignment and Focus

- * Time Savings based on 8 scans a week
- * Tripod or studio stand versus Camera Cart
- * Tripod 20 to 40 minutes average 34 minute set up
- * Camera Cart 4 minute set up
- * Camera Cart saves 30 minutes per scan times 8 scans a week

That's 26 full working days

A simple Camera Cart

Saves you 4 hours a week

Saves you 208 Hours per year

That's 26 full 8 hour working days

...Every Year!

Hanging Art

- * Align Center of Camera Lens Height to Match Center of Copy Wall Height



Securing Art for Photography

Save Time, Save Money, Simplify Workflow

Turn difficult copy procedures into a simple task. Quickly hang art in a safe and secure way, flat and centered to the lens.

Safe for all kinds of art.



- Interlocking Z Bar Mounting Hardware
- Easy Installation
- Wall is Removable
- Wall is Light Weight

R & R Copy Systems
 34101 Mazo Drive • Dana Point, CA 92629
 808-878-4154 • randy@visualimpact.org
www.randrcopysystems.com



- Quick Release Knobs
- Easy Size Change
- Fast Art Hanging
- Smooth Glide Track
- Effortless Art Hanging
- Calibration Scale
- Precise Centering of Art
- Holds Art Flat and Secure
- Built in Magnetic Wall
- 2 foot by 4 foot metal
- 4' System has 4' Holding Fence
- 8' System has 6' Holding Fence
- Hardwood Holding Fences
- Flat Matte Black Surface
- Heavy Duty Rails
- Can hold up to 200lbs
- Velcro for Attaching Color Charts



Two Models Available
 Prices FOB Dana Point, CA • Includes Packaging
 48 Copy System Accommodates Art up to 42 x 96 • \$599
 96 Copy System Accommodates Art up to 90 x 120 • \$895

Hanging Art

- * Time Savings based on 8 scans a week
- * My old plywood wall versus Copy Wall
- * Easel or Plywood wall 15 to 25 minutes setup
- * Average 20 minute set up For Easel or Plywood wall
- * Copy Wall .5 to 2 minutes minute set up
- * Copy Wall saves 18 minutes per scan times 8 scans a week

That's 16 full working days

A Copy Wall

Saves you 2.4 hours a week

Saves you 125 Hours per year

That's 16 full 8 hour working days

Every Year

***That's 42 full working days
Added back into your
Life each year
if you use a
Camera Cart & Copy Wall
...Every Year!***



Lighting Art



R&R Copy Lights





Polarize or Not?

Shoot Large Pieces in sections and stitch

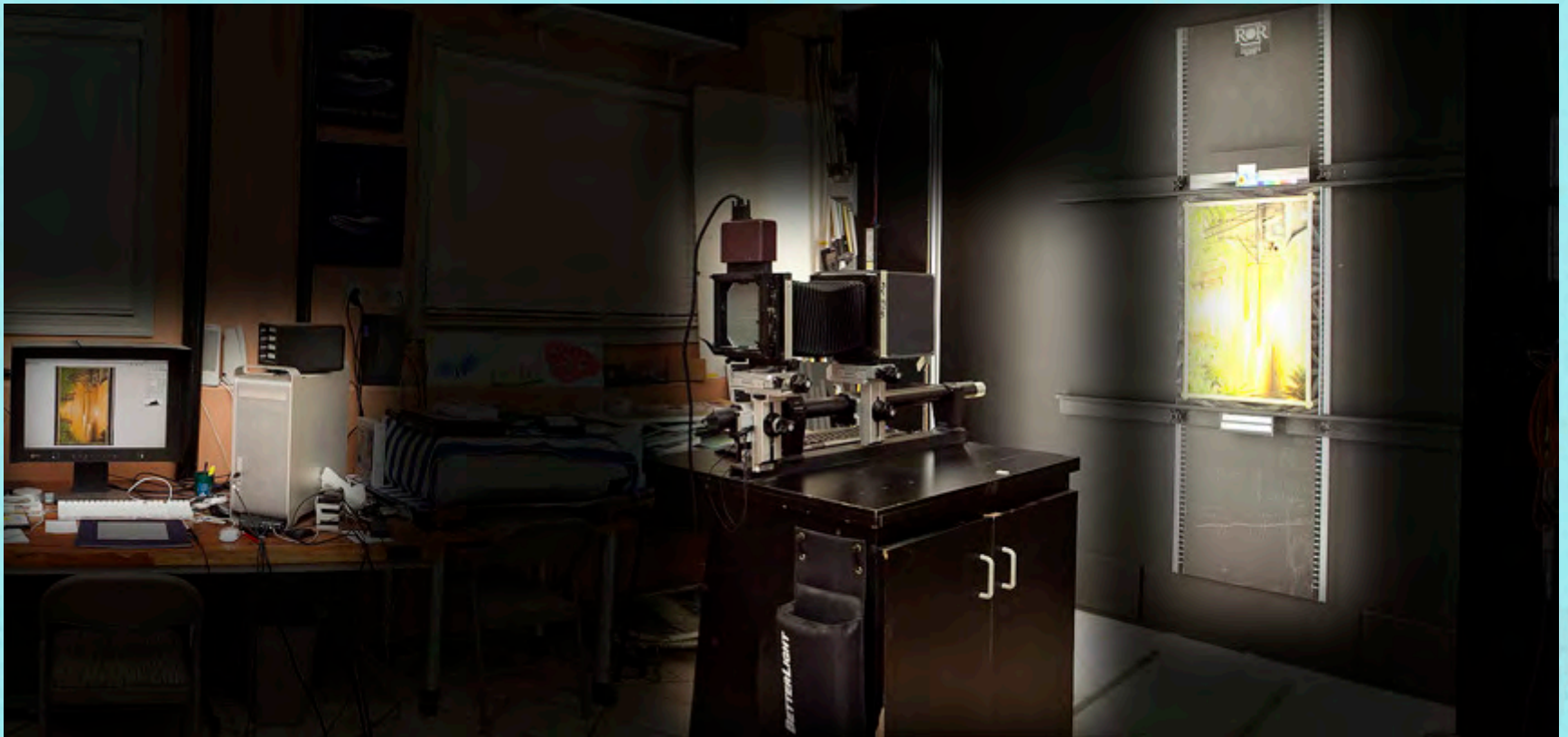
Polarize or Not?

- * Always Hang Art Portrait
- * Move Light to more acute angle
- * Shoot in sections
- * Move art on bottom clamp of Copy Wall
- * Issues with color accuracy



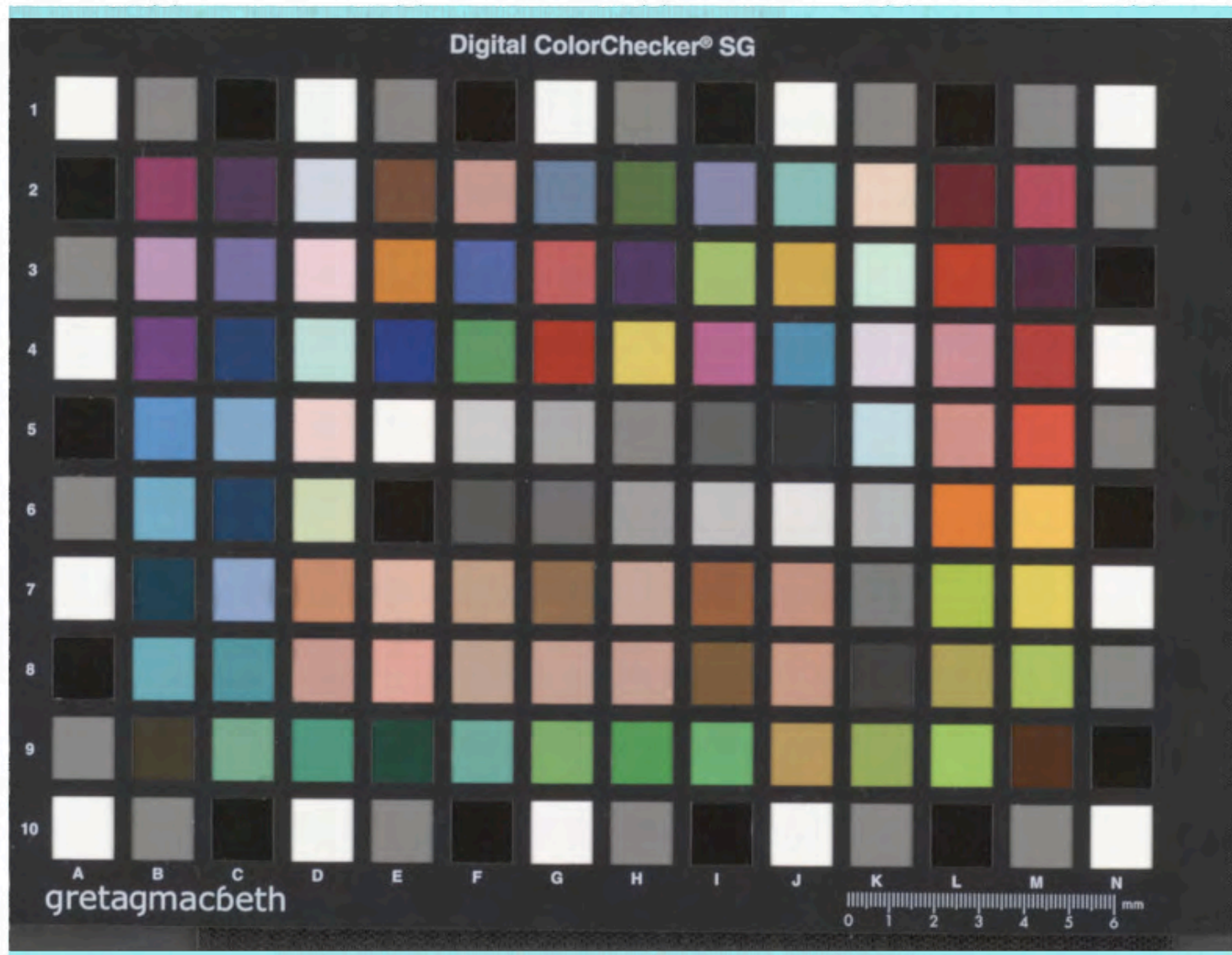
Viewfinder

* Placement of Monitor and Art for Viewing



Viewfinder

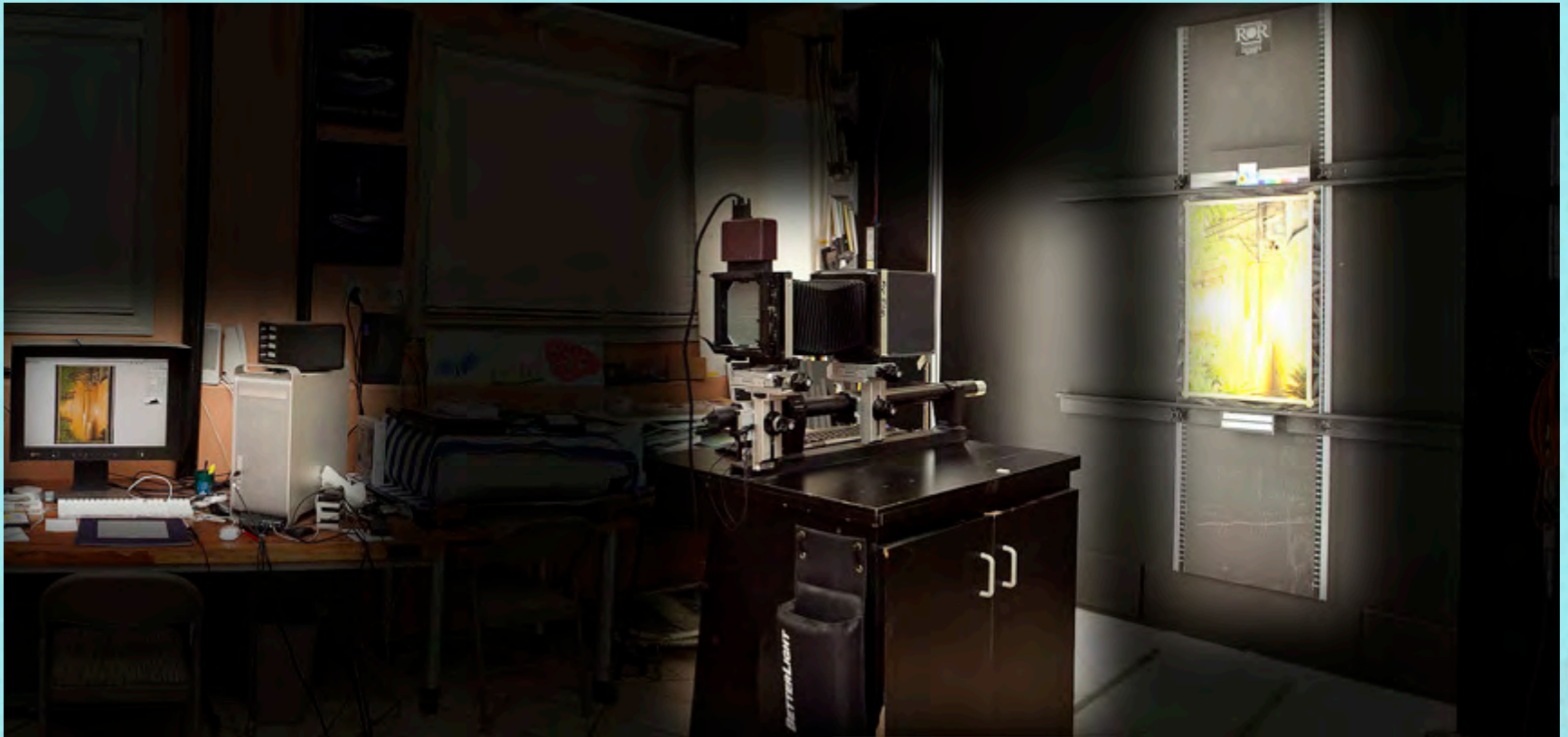
- * Scientific versus Visual
- * Is Scanning a Art?
- * Temperature of Lights and Optimization of Monitor Calibration
- * Willingness to play with Contrast and Curves
- * Repro 2.2 v2
- * Load Custom Profile made with X-Rite SG chart
- * Make preview in Viewfinder to match exact to original



Follow Jerry Kuska's Calibration Document

Viewfinder

* Placement of Monitor and Art for Viewing



Robin Myers' EquaLight™

The combination of lens and lighting falloff can produce a very non-uniform intensity pattern. While most programs have simple lens falloff compensation, EquaLight has a very easy and effective way to compensate for any light intensity falloff.

RMimaging.com



Digital Printing Workshop

Maui September 20-24, 2010



Author of Software Cinema DVD
The Perfect Print by Randy Hufford



BetterLight Scan Back